



CAROLINE

A NEW MUSICAL

SHOW PROGRAMME

SET SAIL ON

CAROLINE

A NEW MUSICAL

The hardest part of writing *Caroline: A New Musical* was deciding which part of this richly layered story to tell.

When I began my initial research, I was struck by the sheer breadth and scale of this remarkable era in music broadcasting. Those familiar with the period will recognise that, while the story is rooted in truth, it also takes a degree of artistic licence, particularly in the portrayal of characters, most of whom are 'based on' real individuals who were at the core of the pirate radio movement. Declan is a nod to Ronan O'Rahilly, Robbie draws on Tony Blackburn, and the unnamed Postmaster General represents the succession of MPs who held the role during this turbulent period.

I hope you love the show as much as I've enjoyed writing it, and that you are swept up in the spirit, energy and rebellious creativity of this extraordinary moment in musical history.



VIKKI STONE
WRITER

Historical Context & Content Advisory

Caroline: A New Musical is inspired by events from 1964-1967. While the production draws on the social atmosphere and historical circumstances of the period, with the exception of the characters Dave the Fish, Declan, Kitty and Maureen, all characters and storylines are fictional. Any resemblance to real people or events is unintended and used solely for storytelling purposes. This production also includes depictions of smoking and historical advertisements for smoking products, reflecting attitudes of the time.

SHOW SPONSORS & FUNDERS



Caroline: A New Musical was developed with the support of the National Theatre's Generate programme.

The Generate Programme

National Theatre



www.jameslindsay.co.uk | 01206 761111
www.tc-group.com | 0808 506 8625
www.ashtonslegal.co.uk | 0330 404 0749

SET SAIL ON

CAROLINE

A NEW MUSICAL

Inspired by the true story of Radio Caroline, the pirate station that broadcast from a ship off our own coastline, this show captures a moment when a group of young people decided the rules didn't work for them and changed individual lives and the sound of Britain forever. But this isn't just a story about the past – it's about what happens when voices go unheard, when systems feel closed and when people choose to challenge that anyway. It's about identity, ambition and the courage to take up space.

This production has been created in a way that mirrors the spirit of the story itself. Instead of working alone, theatres across the region have come together to form the East Anglian Touring Consortium – pooling ideas, talent, and resources to make something bigger than any one of us could achieve on our own. At a time when it's becoming harder for regional theatres to take risks or make large-scale new work, *Caroline: A New Musical* is a reminder of what's possible when we are brave to collaborate.

You'll see that spirit on stage. The show is powered by a brilliant company of actor-musicians – many from this region who play, sing and tell the story live, giving it an immediacy and energy. Set to a soundtrack of iconic 60s music, it's joyful, rebellious and full of heart.

Like the original Radio Caroline broadcasts, making this show has been a leap of faith. Built from scratch, shaped in rehearsal rooms here and brought to life by a motley crew of organisations, artists and audiences from across the region, it's something we've made together.

We're so pleased you're here to experience it with us.

Welcome aboard.



DOUGLAS RINTOUL
DIRECTOR



ALEX THORPE
CO-DIRECTOR

The first performance of *Caroline: A New Musical* was at the New Wolsey Theatre on Fri 17 April 2026.

CAST



Nicola Bryan
Betty

Nicola trained at the Birmingham School of Speech & Drama, gaining a BA (Hons) degree in Acting and Musical Theatre.

Her credits include Alternate Rosie/u/s Donna in *Mamma Mia!* (International Tour), Myrtle Bagot in *Brief Encounter* (UK Tour), Olive Osmond in *The Osmonds* (UK Tour), West Witch/Aunt Em in *The Wonderful Wizard of Oz* (Theatre Royal Bury St Edmunds), Mavis in Noel Coward's *Me & The Girls* (Regional Tour), Carmen in *Sweet Charity* (Watermill Theatre), Swing & u/s Sister Mary Patrick & Mother Superior in *Sister Act* (UK Tour), Rosie in *Cabaret* (MAC, Belfast), Heather in *Our House* (UK Tour), *Dreamboats & Petticoats* (Playhouse, West End), Lambchops u/s Serena, Mabel and Miss Bell in *Fame* (Edinburgh Playhouse and UK Tour), Beauty in *Beauty & The Beast* (Coventry Belgrade), Swing u/s Pam in *The Full Monty* (UK Tour), *Sleeping Beauty* (Chatham), *Jack and The Beanstalk* (New Wolsey Theatre, Ipswich & Potters Bar, London), *West End Girls* (Jersey Opera House) and *KOBA - Man of Steel*, originating the role of Nadezdha (Alexandra Theatre, Birmingham).

Gareth is a Cornish actor, musician, writer, comedian and voiceover artist who has performed in theatre, film, TV, radio, commercials, animations, sketches and web-series.

His credits include the Hall for Cornwall Pantomime for two years running, Stanley Stubbers in *One Man, Two Guvnors* (New Vic), *Julius Caesar* (Southwark Playhouse), Michael Beurk in *The Crown* (Netflix), Gus in *The Dumb Waiter* (Nottingham Playhouse), various roles in over 20 comedy shorts for the *About Shakespeare* series (BBC), Prince Owain in *Sleeping Beauty* (The Dukes, Lancaster), Dr Seward in *Dracula* (Blackeyed Theatre), Macduff/Witch in *Macbeth* (Young Shakespeare Company), Clive in *The Night Before Christmas* (Full House Theatre), Jimmy Porter in *Look Back in Anger* (BESTheatre) and adverts for Tesco Mobile, Hampton by Hilton, Coral, Finish, Footlocker and ESPN.



Gareth Cooper
Postmaster General

CAST



Jake Halsey-Jones
Robbie

Jake's stage credits include ensemble/cover Jared & Connor in *Dear Evan Hansen* (Asian Tour), John Laurens/Phillip Hamilton & Cover Alexander Hamilton in *Hamilton* (Victoria Palace), Tommy in *Lady Chatterley's Lover* (The Shaftesbury Theatre), Melchior in *Spring Awakening* (The Frogmore Papermill), Chino in *West Side Story* (BBC Proms 2018, Royal Albert Hall) and Riff in *West Side Story* (The Frogmore Papermill).

His recording credits include ATC in *42 Balloons* (Perfect Pitch Musicals) and Durriken Kascht in *For Tonight* (UK Concept Album, Bullion Global).

His television credits include *Strictly Come Dancing* (BBC).

His concert credits include Soloist in *Soft Sessions 2020*, Soloist at *The Industry Minds Awards 2019* (The Piano Works) and Vocalist in *Live at the Zedel* (Brasserie Zedel).

Joey is an experienced actor, musical director, composer and arranger who trained on the Actor Musicianship course at Rose Bruford.

His acting credits include *Noël and Gertie* (UK Tour), *Ordinary People* (Farnham Maltings), *Brassed Off* (Theatre By The Lake/UK Tour), *Brief Encounter* (Stephen Joseph Theatre/UK Tour), *Hansel and Gretel* (NIE & Tobacco Factory), *Assassins* (Watermill Theatre), *The Curious Case of Benjamin Button* (Southwark Playhouse), *A Midsummer Night's Dream* (Watermill Theatre), *Romeo & Juliet* and *The School for Scandal* (Shakespeare at the Tobacco Factory).

As a musical director, arranger and/or composer, his credits include *The Comedy About A Bank Robbery* (Mischief Theatre & Criterion Theatre, West End), *Beautiful - UK Tour* (Bath Theatre Royal/Tour), *Mog The Forgetful Cat* (Royal & Derngate/The Wardrobe Ensemble), *The Snow Queen* (NIE, US Tour & Tobacco Factory), *The Realness* (The Big House), *Reasons To Be Cheerful* (Graeae), *Oliver!* (Watermill Theatre), *Three Minute Heroes* (Belgrade Theatre) and *The Threepenny Opera* (Graeae/UK Tour).



Joey Hickman
Declan

CAST



Rhiannon Hopkins
Kitty

Rhiannon is an Actor-Musician, Musical Director and Dancer who trained at Bodywork Company Cambridge.

Her credits include Miss Chutney/Blue Badger/Assistant Musical Director in *The Lion, The Witch and the Wardrobe* (UK and Ireland Tour), Christine/Actor-Musician/Music Captain in *One Man, Two Guvnors* (New Vic, Newcastle), Assistant Musical Director/Cover MD for *Fantastically Great Women Who Changed the World* (UK Tour), Lydia in *Cinderella Rocks* (The Garage, Norwich), Vi Petty in *Buddy - the Buddy Holly Story* (UK Tour), Composer/Musical Director for *Love Me Tinder* (Karma Sanctum, London), *Sleeping Beauty* (Norwich Theatre Royal) and *Funny Gals Friday* (Arts Theatre, London).

As a composer and musical comedian, Rhiannon was a finalist in The Musical Comedy Awards, was shortlisted for the Funny Women Awards and won the International Songwriting Competition Award.

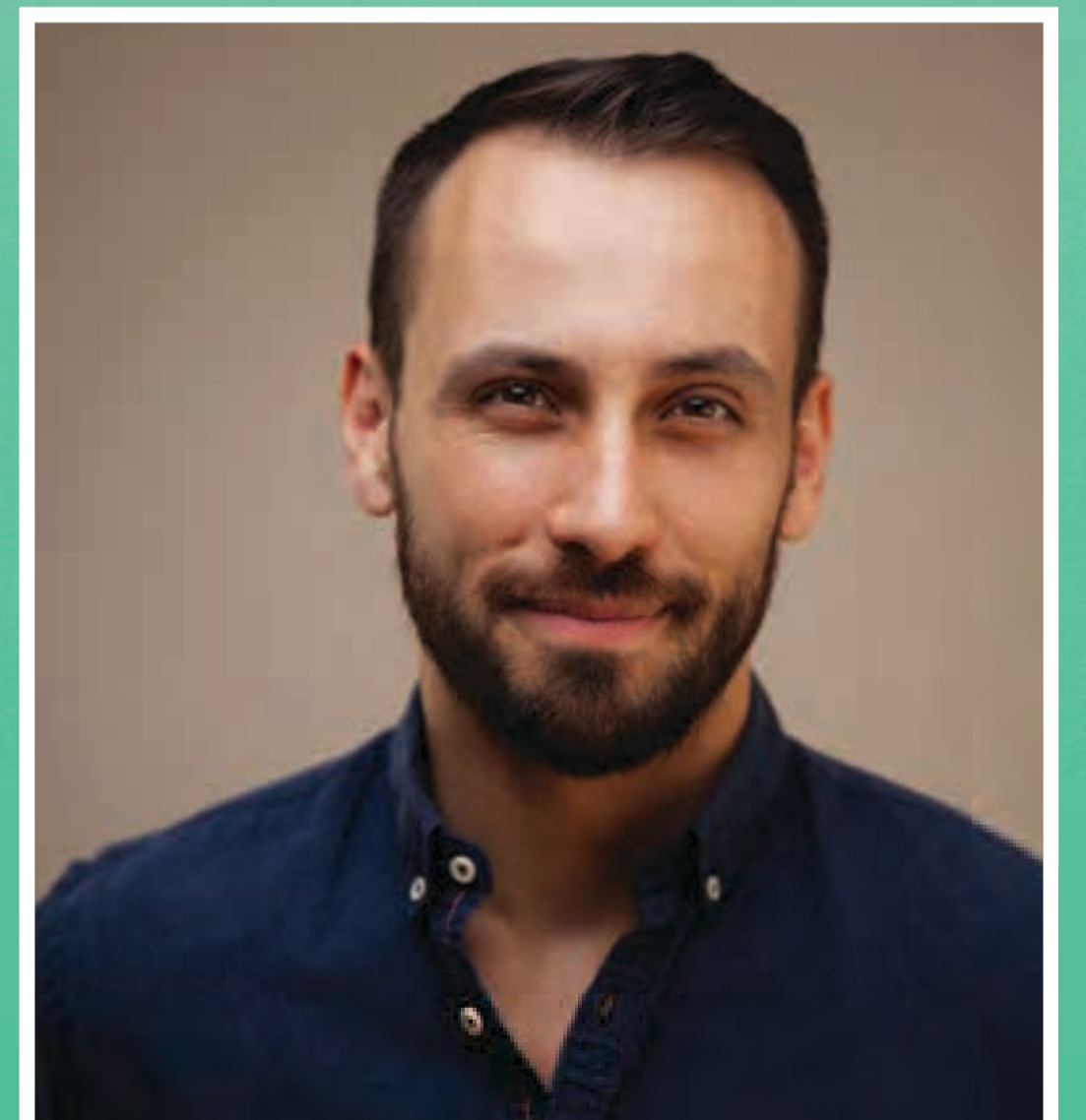
James is an actor, director and voice artist who trained at ArtsEd. He is co-owner and Creative Director of Riot Cabaret Pro Wrestling, and is currently a director at *The Paddington Bear Experience* (Selladoor Worldwide).

His theatre credits include *Peaky Blinders: The Rise*, *Doctor Who: Time Fracture* and *The Great Gatsby* (Immersive Everywhere), *One Man, Two Guvnors* (UK Tour), *The Tempest* and *Othello* (Stafford Shakespeare Festival), *The Woman in Black* (Simply Theatre, Geneva), *The Importance of Being Earnest*, *Rope*, *Amy's View* and *September Tide* (Paul Taylor-Mills Ltd/Theatre Royal Windsor).

His TV credits include *Casualty* (BBC Studios) and *The Last Hours of George Best* (ITV Studios).

His audio credits include *Really Good Exposure* (Soho Theatre), *Anno: 117 Pax Romana* (Ubisoft), *Antigone* and *Principals* (AKS Immersive), *Killer by Nature* and *Unheard: The Story of Anna Winslow* (Audible UK) and *Dark Shadows* (Big Finish).

James has also narrated exhibits for the Science Museum.



James Lawrence
Steven

CAST



Claire Lee Shenfield
Caroline

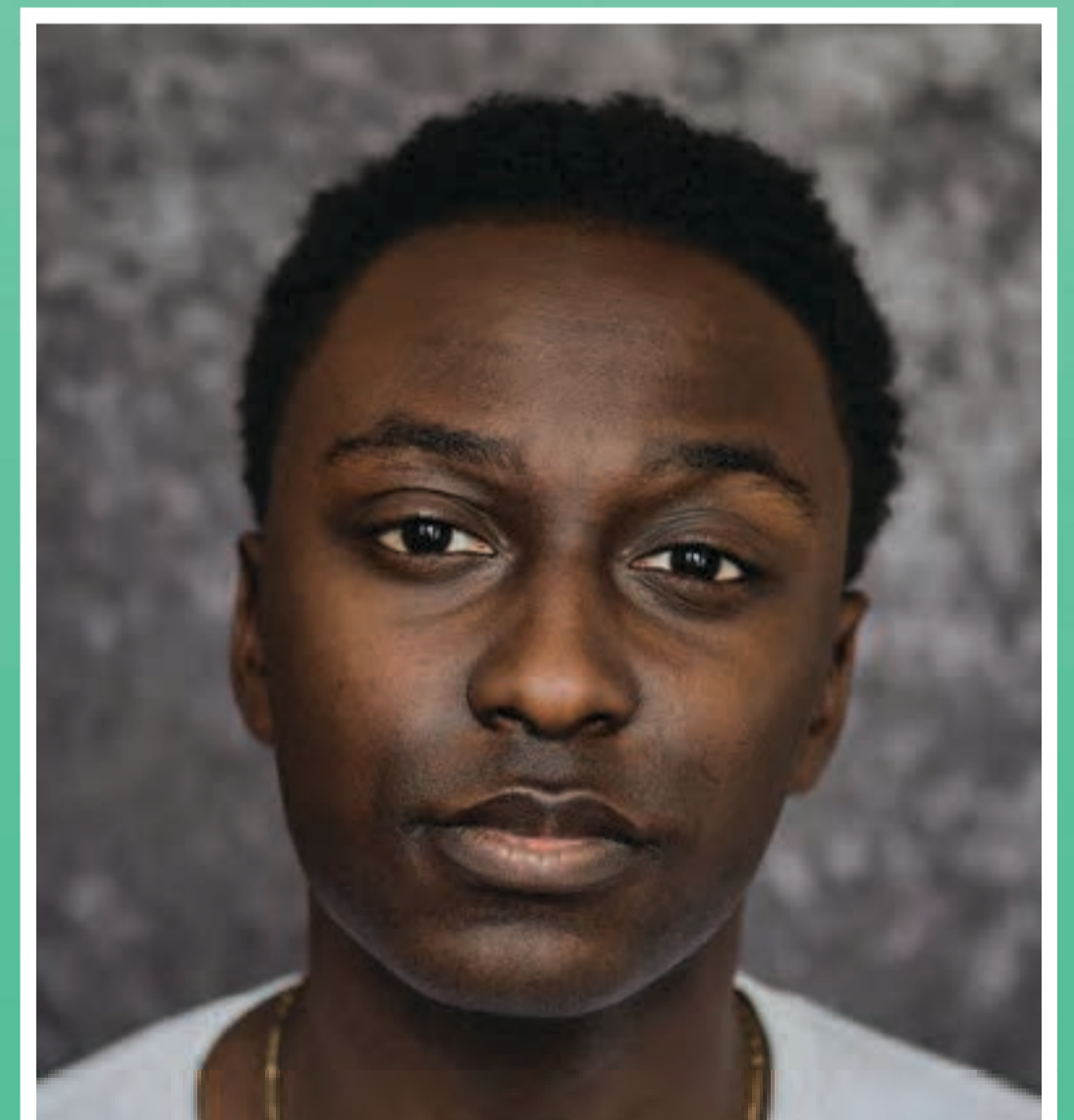
Claire is an actor and musician from Hong Kong and Essex. She graduated from Cambridge University.

Her theatre and TV credits include *The Rivals* (Orange Tree Theatre/Theatre Royal Bath), *A Christmas Carol* (The Barn Theatre), *Little Women* (UK Tour), *A Christmas Carol* (Derby Theatre), *Once* (Tokyo, China and Taiwan), *The Importance of Being Earnest* (Mercury Theatre), *Magical Merlin* (West End), and *Casualty* (BBC).

Jerome's training includes Michael Xavier's MX Masterclass (Full Scholarship).

His credits include *Standing At The Sky's Edge* (National Theatre at the Gillian Lynne Theatre, West End), *Once On This Island* (Theatre Royal, Drury Lane), *Mama Goose* (Stratford East), *Grease*, *The Great Gatsby* and *Sunshine On Leith* (Pitlochry Festival Theatre 2025 Season), *Grease* (Blackpool Grand), *The Great Gatsby* (Derby Theatre), *Whistle Down The Wind* (The Watermill Theatre), *Cinderella* (Lyric Hammersmith), *Sleeping Beauty* (Queen's Theatre Hornchurch), *For You, I'd Wait* (Original Cast - Turbine Theatre & Union Theatre) and *Ant & Dec's Saturday Night Takeaway* (Ensemble - ITV).

He'd like to thank his family & agents for their unending support.



Jerome Lincoln
Private Secretary

CAST



Perry Meadowcroft
Dave the Fish

Perry's theatre credits include Peter Quince/Benny & Bass Guitar in *A Midsummer Night's Dream* (OVO Theatre & Minack Theatre), Pistol & Bass Guitar in *The Merry Wives of Windsor* (OVO Theatre), Glenn in *Freddie Ted & The Death of Joe Orton* (Ray Rackham Productions), Reggie Kray in *KRAY KRAY* (PNP Productions), George Schlatter, Drums & Guitar in *JUDY!* (The Arts Theatre), Justin Mattison in *Bad Girls* (Union Theatre) and Phil Spector & Drums in *Leader of the Pack* (Waterloo East Theatre).

His immersive credits include Bard in *The Witcher - Season 3 Launch* (Netflix, The Production Family) and Artillery Man, Corporal Watts in *Jeff Wayne's War of The Worlds The Immersive Experience* (Layered Reality).

His film credits include Band Drummer in *Mamma Mia! Here We Go Again* (Universal Pictures).

Born in Suffolk, Eloise trained at Rose Bruford College in Actor-Musicianship.

Since graduating in 2023, her theatre credits include *Dick Whittington and His Cat* (New Wolsey Theatre), *Once Upon a Flowerbed* (Moonbeam Theatre), *The Littlest Yak* (LAS Theatre) and *Teechers* (New Wolsey Theatre & Eastern Angles).

Most recently, she appeared as the Pigeon in the New Wolsey Theatre's 2025/26 Rock 'n' Roll panto, *Beauty and the Beast!*



Eloise Richardson
Mary

CAST



Marianna Alkiviades
Teenage Girl



**Kelsey Serena
Forrester**
Teenage Girl

As part of this production, East Anglia Touring Consortium wanted to create opportunities for emerging regional talent by inviting two young people from the East of England to join the company of this professional touring musical in each location.

This initiative reflects our commitment to supporting and developing creative talent from across the region, helping provide valuable experience and pathways into the industry.

We're delighted to welcome two brilliant students from Peterborough Performing Arts to the cast of *Caroline: A New Musical* at the New Theatre Peterborough!

IN REHEARSALS



THE SHOW



WILL GREEN
SHOW PHOTOGRAPHER

CREATIVE TEAM



HELEN ATKINSON **SOUND DESIGNER**

Credits include *Noises Off*, *Sleeping Beauty* and *The Red Lion* (New Wolsey Theatre), *Coven* (The Kiln Theatre), *Creakers The Musical* (Southbank Centre), *Beauty & The Beast* and *Dick Whittington* (CBeebies Pantomime), *Medicine* and *Ballyturk* (Landmark Productions & Galway International Arts Festival), *The Suicide* (Lyttelton, National Theatre) and *The Village* (Theatre Royal Stratford East)

Podcasts and projects include *Through the Cracks*, *F**ked Up Bedtime Stories*, *That Podcast* (ETT) and *Living Newspaper Edition 7* (Royal Court).

Helen was awarded Irish Times Irish Theatre Awards - Best Soundscape 2022 for *Medicine* and Best Sound Design 2014 for *Ballyturk*.



STELLA BACKMAN **SET & COSTUME DESIGNER**

Stella is a freelance set and costume designer primarily working across theatre and live music. Selected theatre credits include *Sensory Cinders* (@sohoplace, West End), *Whodunnit (Unrehearsed) 4* (Park Theatre), *Lil.Miss.Lady* (Barbican Centre), *The Turn of the Screw* (Queen's Theatre Hornchurch), *Perfect Show for Rachel* (Barbican Centre and touring), *Countess Dracula* (Hull Truck Theatre), *Bossy* (Lyric Hammersmith), and *Different Owners at Sunrise* (The Roundhouse).

Selected live music credits include *Sleep Token: Even in Arcadia Tour* (Headliners Download Festival, US Arena Tour), *mgk* (Vans Warped Tour), *Texas: The Very Best of Texas* (UK Arena Tour) and *James Arthur* (O2 Shepherd's Bush Empire).



TITILOLA DAWUDA **DRAMATURG**

Titilola Dawudu is the Artistic Director and CEO of HighTide Theatre.

She has worked for and with organisations such as Clean Break, Ovalhouse, Soho Theatre, NitroBeat, Tamasha, The Advocacy Academy, the British Council and Coventry City of Culture Trust.

Titilola co-created and edited *Hear Me Now Audition Monologues for Actors of Colour* with Tamasha and created Vol.2, published in August 2022 by Methuen Drama. Titilola is a published writer and has written for Theatre Royal Arojah in Abuja, Nigeria, Theatre Peckham, Ovalhouse and Soho Theatre.

CREATIVE TEAM



CHARMIAN HOARE VOICE COACH

Recent theatre credits include *The Resistable Rise of Arturo Ui* and *Edward II* (RSC), *Till the Stars Come Down*, *Underdog*, *The Lehman Trilogy*, *The Motive and the Cue*, *War Horse* and *The Curious Incident of the Dog in the Night-Time* (National Theatre), *The History Boys* and *Summer 1954* (Bath Theatre Royal Productions), *White Christmas* (Crucible, Sheffield), *Private Lives* (Donmar Theatre), *The Birds and the Bees* (New Wolsey Theatre, Ipswich), *Fatal Attraction* (UK Tour), *Bonnie & Clyde* (West End), *Singing in the Rain* (Sadlers Wells), *Company* (Guilgud Theatre), *Local Hero*, *The Taxidermist's Daughter*, *The Unfriend*, *South Pacific*, *Me and My Girl*, *Fiddler on the Roof* and *Quiz* (Chichester Festival Theatre).



HARUKA KURODA FIGHT & INTIMACY DIRECTOR

Haruka is a certified British Academy of Dramatic Combat instructor, Fight Director and a BECTU registered Intimacy Professional.

Her most recent work in theatre as Fight/Intimacy Director includes *Entertaining Mr Sloane* (Young Vic), *Carmen* (ENO), *Noises Off* (New Wolsey Theatre), *This Bitter Earth* (Soho Theatre), *Three Sisters*, *The Taming of the Shrew*, *Ghosts* (Shakespeare's Globe), *Ballet Shoes* (NT), *The House Party* (Chichester Festival Theatre), *Of Mice and Men* (Derby Theatre), *Kinky Boots the Musical* (Leicester Curve), *A Raisin in the Sun* (Leeds Playhouse) and *Don't Look Now* (New Wolsey Theatre).



CALLUM MACDONALD LIGHTING DESIGNER

Callum Macdonald is a freelance lighting designer, associate designer and touring re-lighter working across theatre, dance, opera and live events in the UK and internationally. In 2019 he was one of 38 emerging designers selected for the Association of Lighting Designers' Lumiere Scheme, receiving year-long mentorship from Mark Jonathan that strengthened his technical practice and professional network. Backed by Arts Council England's Develop Your Creative Practice programme (2021-22), Callum expanded his work on large-scale drama, musical, opera and ballet productions. He began at the New Wolsey Theatre in Ipswich and continues to tour and design for venues including the Royal Albert Hall. He is a member of ALPD and Equity.

CREATIVE TEAM



DOUGLAS RINTOUL DIRECTOR

Douglas is Chief Executive and Artistic Director of the New Wolsey Theatre, Ipswich.

Born in Bury St Edmunds and raised in Colchester, Douglas read Drama at the University of Birmingham, trained on the Regional Theatre Young Director Scheme at Salisbury Playhouse, and attended the National Theatre Studio's Young Directors' Programme.

Recent directing credits include *As You Like It* (National Theatre Public Acts), *Brief Encounter* (New Wolsey Theatre, Salisbury Playhouse), *Noises Off* (Les Théâtres de la Ville de Luxembourg, New Wolsey Theatre, Queen's Theatre Hornchurch, Theatre by the Lake), *Sleeping Beauty* and *Don't Look Now* (New Wolsey Theatre).



SUNDEEP SAINI CHOREOGRAPHER

Recent credits include *Private Lives* and *Brief Encounter* (Royal Exchange Theatre), *Two* (Shakespeare North), *Period Parrty* (Soho Theatre), *Dancing at Lughnasa* (Crucible Theatre/Royal Exchange Theatre), *Pop Off*, *Michelangelo!* (Underbelly Cow/Boulevard Soho), *Jungle Book* (Octagon Theatre), *Beautiful: The Carole King Musical* (Pitlochry Festival Theatre), *Little Shop of Horrors* (UK Tour), *A Tryal of Witches* (Theatre Royal Bury St Edmunds), *The Blonde Bombshells of 1943* (Octagon Theatre/Theatre by the Lake/Stephen Joseph Theatre), *The Trial of Josie K* (Unicorn Theatre), *The Mesmerist* (Watford Palace), *The Secret Diary of Adrian Mole* (Queens Theatre Hornchurch), *As You Like It* (National Theatre Public Acts Production) and *Goldilocks and the Three Bears* (New Wolsey Theatre).



PAUL SCHOFIELD MUSICAL SUPERVISOR

Paul is a Musical Supervisor, Composer, Orchestrator and Arranger, working across theatre, concerts and recording.

As Musical Supervisor, his recent credits include *Hair - In Concert* at the London Palladium (directed by Arlene Phillips), *Oti Mabuse - I Am Here* (UK Tour/London Coliseum), and *Miracle on 34th Street* at HOME Manchester. He is currently working on a new production of *Little Shop of Horrors* for Manchester and Liverpool (directed by Carrie-Anne Ingrouille), and a new play, *Allegra* (written by Peter Quilter, directed by Stephen Mear and starring Maureen Lipman).

CREATIVE TEAM



VIKKI STONE WRITER

Vikki Stone is an Olivier Award-winning writer, comedian, musician, composer, presenter and actress.

She is currently writing the stage adaptation of the 90s hit film *Coyote Ugly* with original screenwriter Gina Wendkos and multi-Oscar-nominated composer Diane Warren, for Jamie Wilson Productions. Jerry Mitchell, a multi-Tony Award winner, will direct and choreograph the production, which is due to open in the West End in 2027.

For the New Wolsey Theatre, her credits include *Dick Whittington*, *Sleeping Beauty*, *Beauty and the Beast*, and *Cinderella* (opening later this year - do join us!).

Further information: www.vikkistone.com | Socials: @vikkistone



ALEX THORPE CO-DIRECTOR

Alex is Creative Director at Queen's Theatre Hornchurch, a producing theatre with a catchment area of over 1 million people serving Outer East London and South Essex.

Directing credits include *Handbagged* (National Theatre Theatre Nation Partnerships, Queen's Theatre Hornchurch), *Bedroom Farce* (Queen's Theatre Hornchurch), *First Encounters: The Comedy of Errors* (Royal Shakespeare Company), *Three Tales from Ovid* (Royal Shakespeare Company), *Twelfth Night* (Orange Tree Theatre), *The Remains of Logan Dankworth* (Norwich Arts Centre, UK Tour), *Frankie Vah* (Underbelly, Soho Theatre) and *Lee Harvey Oswald* (Finborough Theatre).

Alex is a tutor for Open Door, a non-profit organisation that helps young people access drama schools. He worked in the London Theatre team at Arts Council England between 2021-2023.

PRODUCTION TEAM

MICHAEL ACHTMAN - Audio Describer

STEVEN BOWYER - Casting Assistant

SIMON DEACON - Production Sound Engineer

LUCY FARRANT - Assistant Stage Manager (Rehearsals)

FRANCESCA MAI - Assistant Stage Manager

TOM MULLINER - Lighting Programmer

PAUL RIDLEY-THOMAS - Hair Styling & Dressing

CAROLINE SMITH - BSL Interpreter

LIZZY STEWART - Sound No 1

ANDY STUBBS - Production Manager

KIRA TISBURY - Wardrobe Maintenance & Dresser

JUDITH VOLK - Company Stage Manager

MELODY WRIGHT - Deputy Stage Manager

Tour sound equipment supplied by **CROSSLIGHT & SOUND PRODUCTION SERVICES**

Scenery built and painted by **LIVERPOOL SCENIC WORKSHOPS**

Tour transport supplied by **PAUL MATHEW TRANSPORT**

Tour lighting equipment supplied by **PRG RENTAL**

WITH SPECIAL THANKS TO

Alison Duguid PR, Becky Martin PR, Clare Slater, Rebecca Pitt, Vicki Phillips, DanceEast, East Anglian Touring Consortium Staff, National Theatre, Radio Caroline, Suffolk New College, Venue Chaperones, Venue Ushers & Voluntary Staff, Warehouse Digital, Will Green Photography

MUSIC CREDITS

Dead End Street

Written by Raymond Davies, published by Davray Music Ltd
courtesy of Carlin Music Delaware LLC

Wouldn't It Be Nice

Written by Brian Wilson, Tony Asher & Mike Love,
published by Universal Music Publishing Ltd

Caroline

Written by Tony Hiller & Perry Ford, published by EMI Harmonies Ltd

These Boots Are Made For Walkin'

Written by Lee Hazelwood, published by Universal Music Publishing Ltd

Twist & Shout

Written by Phil Medley & Bert Burns, published by Carlin Music Delaware LLC,
Sony/ATV Music Publishing (UK) Ltd

Not Fade Away

Written by Charles Hardin & Norman Petty, published by Peermusic (UK) Ltd

I Love You Baby

Written by Paul Anka, published by EMI Music Publishing Ltd

Hippy, Hippy Shake

Written by Chan Romero, published by Bucks Music Group Ltd

Gimme Some Lovin'

Written by Steve Winwood, Spencer Davis, Muff Winwood,
published by Kobalt Music Publishing Ltd, Universal/Island Music Ltd

MUSIC CREDITS

Shout

Written by Ronald & Rudolph Isley, published by EMI Music Publishing Ltd

My Generation

Written by Pete Townshend, published by Fabulous Music Ltd

Paint It Black

Written by Mick Jagger & Keith Richards, published by ABKCO Music Inc

What Becomes Of The Broken Hearted

Written by William Weatherspoon, Paul Riser & James Dean, published by EMI Music Publishing Ltd, EMI Music/Jobete Music

One For My Baby

Written by Harold Arlen & Johnny Mercer, published by Chappell-Morris Ltd

Reach Out (I'll Be There)

Written by Lamont Herbert Dozier, Brian Holland, Eddie Holland & Liliame Konyn, published by Stone Agate Music, Sony/ATV Music Publishing LLC, EMI Music/Jobete Music

Can't Take My Eyes Off You

Written by Bob Crewe & Robert Gaudio, published by Universal Music Publishing Ltd/Sony/ATV Music Publishing LLC

You're My World

Written by Umberto Bindi, Gino Paoli & Carl Sigman, published by Universal Music Publishing Ltd/Ricordi

All radio jingles and adverts are used with the kind permission of Radio Caroline

radio
Caroline 

**BROADCASTING THE BEST
MUSIC FROM ACROSS THE
DECADES SINCE 1964**

**On 648 AM across the UK
and into Europe**

On local DAB

**Worldwide online &
on the Radio Caroline app**

radiocaroline.co.uk



THE EAST ANGLIAN TOURING CONSORTIUM



MERCURY



The East Anglian Touring Consortium was founded in 2025 by eight theatres and production companies – Landmark Theatres, the New Wolsey Theatre, Eastern Angles Theatre Company, HighTide, the Mercury Theatre, Queen's Theatre Hornchurch, Theatre Royal Bury St Edmunds and Norwich Theatre – to tackle the challenges of mid-scale touring.

When launching the consortium, Douglas Rintoul, the New Wolsey Theatre's Chief Executive/Artistic Director, spoke of challenging costs when producing theatre, saying that "*Across the country, there's a real shortage of high-quality work for the mid-scale, especially in town-based theatres like ours... For those of us still producing at that level, the landscape has changed dramatically.*"

Caroline: A New Musical pilots a new touring model, with a focus on new writing and the development of local talent. The show tours to five of the consortium's venues:

- New Wolsey Theatre, Ipswich – Friday 17 April – Saturday 2 May
- Queen's Theatre, Hornchurch – Wednesday 6 – Saturday 16 May
- New Theatre, Peterborough (Landmark Theatres) – Tuesday 19 – Saturday 23 May
- Mercury Theatre, Colchester – Wednesday 3 – Saturday 12 June
- Theatre Royal, Bury St Edmunds – Tuesday 16 – Saturday 20 June

From everyone at all of the venues involved, we hope that you love the show as much as we've loved being a part of making it happen.

NEW WOLSEY THEATRE, IPSWICH

The New Wolsey Theatre in Ipswich is a vibrant cultural hub enriching the lives of people in Suffolk. We offer a diverse range of performances, community engagement activities, and artist development opportunities. We are nationally renowned for our excellence, diversity, and accessibility.

As a multi-award-winning theatre, we are immensely proud to have recently won the 2024 EADT Suffolk Business of the Year award and the EADT Positive Impact in the Community award, as well as being nominated for the Excellence in Inclusivity award at the 2025 UK Theatre Awards.

We are delighted to have been selected by Julie's Bicycle and Pilio to be part of their Transforming Energy: Capital Readiness programme. We are proud of the progress we have made with reducing our carbon footprint and embedding environmental responsibility across our operations and creative output. We are determined to make our theatre building as energy efficient as possible by its 50th anniversary in 2029.

We produce our own shows and co-produce with UK and international theatres and companies. Our productions include world premieres and landmark revivals of musicals and plays, such as Don't Look Now, Noises Off, Footloose, Bindweed, Kinky Boots, The Season (which recently transferred to the West End and Broadway as Two Strangers (Carry a Cake Across New York)), The Time Machine (nominated for an Olivier Award), Feel Me, Boy On The Roof, and our iconic and award-winning Rock 'n' Roll pantomime. We also present a diverse programme of productions by acclaimed national touring companies and support emerging theatre companies and independent artists.

The New Wolsey Theatre is partially funded by Arts Council England and Ipswich Borough Council. We are also supported by local corporate partners, trusts and foundations, and private members. As a not-for-profit charity, we rely on their investment and are deeply grateful for their unwavering support, which enables us to fulfil our mission.

LANDMARK THEATRES

Landmark Theatres is a nationally operating, community-embedded organisation committed to delivering high-quality theatre to the widest possible demographic, particularly in areas with low cultural engagement.

Founded with the goal of increasing productivity and addressing disproportionality in the arts, Landmark Theatres is driven by a bold mission to be a national leader and a community cornerstone, using performance to innovate, collaborate, empower, include, sustain, and enhance wellbeing across North Devon, Peterborough, and other locations where we work.

We currently operate in North Devon (the Queen's Theatre, Barnstaple & the Landmark, Ilfracombe) and in Peterborough (the New Theatre & the Key Theatre), while also delivering theatre services in additional locations. Landmark Theatres is proudly revenue funded by Arts Council England and is the largest new theatre National Portfolio Organisation (NPO) in the current portfolio.

landmarktheatres.co.uk

EASTERN ANGLES THEATRE COMPANY

Eastern Angles is the touring theatre company for the East of England. We are a regionally focussed theatre company with a broad world view in our approach to creating work with community groups and artists in East Anglia. We aspire to be Radically Hospitable. We aim to put extraordinary effort and emphasis on making people feel welcome. We seek to remove barriers that prevent people from participating in the shared experience of arts, heritage and culture. We are proud and committed to rural community touring and to enhancing the engagement and infrastructure of culture in the East of England. We have a passion for supporting children, young people and our intergenerational audience to achieve their creative potential and ensure access to high-quality cultural experiences are available in the places we live or where we go to school.

Our dynamic organisation is based in Ipswich at the Eastern Angles Centre - a thriving arts centre in the heart of the Westgate Ward. Our annual programme includes a Spring and Autumn Tour, a Christmas show, and a year-round community arts programme. In between, we offer R&D opportunities, readings of new plays, and new community activities in Ipswich, Peterborough, market towns and villages across the East of England.

www.easternangles.co.uk

HIGHTIDE

HIGHTIDE is a writer-centred theatre company, based in the East of England. We produce new plays by playwrights from our region, touring across the East and beyond. We run a year-round writer development programme that creates space for East of England playwrights to thrive. We offer creative writing programmes in schools and community groups to build confidence, wellbeing and employability. We are committed to ensuring everyone, from all backgrounds, can participate in the joy and power of theatre. We believe that partnership and collaboration makes better theatre, as well as more lasting, positive social change. HighTide holds the climate crisis in its name; a daily reminder of our responsibility to act now – with imagination and creativity. We see climate and social justice as inextricably linked and believe that theatre can help rehearse a better future for us all.

HighTide's work is made possible by public investment in the arts from Arts Council England.

Principal Partner: Lansons | Team Farner

HighTide: 01473 459200 / hello@hightide.org.uk

Website | <https://hightide.org.uk/>

Facebook | HighTideTheatre

Twitter | @_HighTide_

MERCURY THEATRE, COLCHESTER

Mercury Theatre is the artistic powerhouse in the East – a vital, vibrant, welcoming centre of culture for the people of Colchester, Essex and beyond. The award-winning theatre presented in our auditorium and in our studio transforms and enriches the lives of our community.

Through our Mercury Productions and Mercury Originals we produce world-class theatre, reinventing familiar stories and conjuring up bold, new ones. Our talent development programme seeks out fresh voices and stories that encourage people to see through the eyes of others. The Mercury's participation programmes connect communities and celebrate creative potential by providing people with everyday opportunities to be artistic and innovative.

A producing and receiving house with 530 seats in the theatre and a capacity of 96 in the studio, the Mercury is accessible throughout and boasts a thriving café-bar, dance studio, rehearsal space, participation space and impressive backstage workshop. Following the major renovation in 2021, Mercury was awarded a BREEAM Very Good certificate, placing it in the top 25% of public buildings in the UK for environmental standards. In 2021 the Mercury was profiled by Theatre Trust as a model of good practice in the UK.

The Mercury was established in 1937, is registered Charity Number 232387 and receives regular investment from Premier Partners Aquabridge Law, Ellisons and The George Colchester, Colchester City Council, Essex County Council and Arts Council England.

QUEEN'S THEATRE, HORNCHURCH

Queen's Theatre Hornchurch is a vibrant producing theatre serving Outer East London and South Essex.

With a catchment of over one million people, QTH is a vital cultural hub producing and presenting bold, engaging and entertaining work on stage and within local communities, alongside a year-round creative participation programme for people of all ages.

Audiences are guaranteed a warm welcome from this three-year winner of UK Theatre's Most Welcoming Theatre, London Theatre of the Year 2020 (The Stage Awards) and 2023 finalist in eight Off West End Award categories for the public's favourite venue. QTH welcomes over 95,000 audience members each year, with a further 35,000 taking part in our community participation activities.

THEATRE ROYAL BURY ST EDMUNDS

Theatre Royal Bury St Edmunds is a contemporary performance venue housed in a historic Regency theatre in Bury St Edmunds, Suffolk. Theatre Royal is a major cultural and social asset and a key part of West Suffolk's cultural landscape.

Theatre Royal Bury St Edmunds is a proud producing house creating four high-quality in-house productions a year. By fostering innovation, creativity and imagination, Theatre Royal works to transform the lives of people in the local community through education and the power of the performing arts. Attracting over 75,000 audience members a year, their eclectic programme is carefully curated to provide a blend of high-quality productions for the residents of West Suffolk and beyond.

Theatre Royal Bury St Edmunds became an NPO (National Portfolio Organisation) in 2023 supported by Arts Council England and is a registered charity (charity number 242977).

Designed by William Wilkins, Theatre Royal Bury St Edmunds is considered to be one of the cultural sector's crown jewels and is the only theatre in the National Trust's portfolio. Its building is owned by the Greene King brewery, leased by the brewery to the National Trust, which in turn leases the theatre to Bury St Edmunds Theatre Management Ltd to run it as a working theatre.

NORWICH THEATRE

Norwich Theatre is a leading arts organisation in the UK and the largest in the East of England.

We are deeply committed to the importance of creative experiences of all kinds for people of all backgrounds and at all stages in their lives.

We produce and present a year-round diverse programme of live performances and creative engagement activities across all artforms. More than 500,000 people a year visit our three venues, Theatre Royal, Playhouse and Stage Two in the heart of the city of Norwich. We work hard to be a place of inclusion and welcome for all those who spend time in our buildings, whether to work with us, watch a show, participate in our activities or relax in our restaurant and bars.

We are also working to put Norfolk and the East of England on the map as a place where international creativity and art are formed through our growing portfolio of originated and co-originated work and each year we increase our reach through our touring work.

Through our award-winning creative engagement programmes we also champion the power of creativity to support positive change, improve people's wellbeing and generate prosperity in all its forms.

We are a registered charity with no regular public funding and rely on a share of ticket sales, one-off grants, fundraising, sponsorship and other commercial activities to deliver our work. Any surplus funds generated each year are reinvested into our artistic and creative programmes and support our vision to achieve a positive impact in all that we do.

NEW THEATRE PETERBOROUGH STAFF

LUKE ALLPORT - Group Marketing Manager
SARAH ATKINS - Duty Manager
BELINDA AYRES - Operations Manager
GEORGE BARNETT - Talent & Participation Manager
ALYSSA BENNETT - Technician
JO BENSON - Operations Manager Interim
JACEY CANHAM - Events Officer
CERYS DAVIS - Programme Officer
LAURA DAWKINS - Ticketing Assistant
RITA DAY - Duty Manager
BECKY EDWARDS - People & Values Officer
ELLIOT GALLAGHER - Ticketing & Audience Insight Officer
WENDY GRAY - Duty Manager
NIC GREGITIS - Marketing Assistant
DAVID GRIFFIN-STEPHENS - Head of Programme & Production
KAREN HARDING - Programme Manager
SARAH HARRIS - People & Values Manager
NATALIA HUTCHINGS - Ticketing Assistant
GEMMA IPPOLITO - Duty Manager
RUSSELL JEANES - Buildings & Facilities Manager
PAUL JEPSON - CEO & Creative Director
SID JONES - Marketing Officer, Digital
WILLIAM LEE - Ticketing Assistant

JOANNA LINFORD - Education Officer
DAN LOWE - Studio & Cinema Technician
BEN LYON-ROSS - Head of Talent & Participation
SION MORRIS - Senior Technician
SONNY NWACHUKWU - Artist Development Associate
MATT OSCROFT - Technical Manager
GEMMA PARKER - Technician
CARMEN PARSONS - Ticketing Assistant
NATALIE PHILLIPS - Head of Content & Business Development
NAOMI PROCTER - Marketing Officer, Press & Partnerships
EMMA RHOADS - Finance Manager
OLIVIA RODRIGUEZ - Marketing Officer, Social Media & Communications
JAG SINGH - Head of Operations
PATCH TATE - Deputy Technical Manager
PAUL TAYLOR - Deputy Operations Manager
PAIGE TRIMM - Finance Assistant
LOUISE WALDRON - Ticketing & Audience Insight Manager
HANNAH WALKER - Duty Manager
ADAM WARD - Finance Officer
TRUDY WEAVING - Duty Manager
JO WILLIAMS - Finance Assistant
KANE WOODCOCK - Duty Manager
JASON ZYMELKA - Head of Finance

Thank you to all of our casual, freelance and volunteer staff across our Peterborough venues.





BECOME A MEMBER

SUPPORT THE ARTS, ENJOY THE PERKS

WHEN YOU BECOME A LANDMARK THEATRES MEMBER, YOU'RE DOING MORE THAN SUPPORTING THE ARTS - YOU'RE BECOMING PART OF OUR STORY.

Memberships provide vital, year-round support that helps us plan boldly, programme ambitiously, and invest in emerging talent and innovative productions. Your contribution directly fuels our ability to reach further into our communities, nurture local artists, and deliver unforgettable experiences to audiences of all ages.

In return for your generous support, you'll enjoy a range of exclusive benefits designed to bring you even closer to the magic of live theatre.

Landmark Icon

£30 Annually

Includes:

- Access to various ticket discounts
- 10% off the bar
- Membership emails
- Priority booking for selected shows
- Discount from partner local businesses



Landmark Legend

£120 Annually

Includes everything in the Landmark Icon membership PLUS:

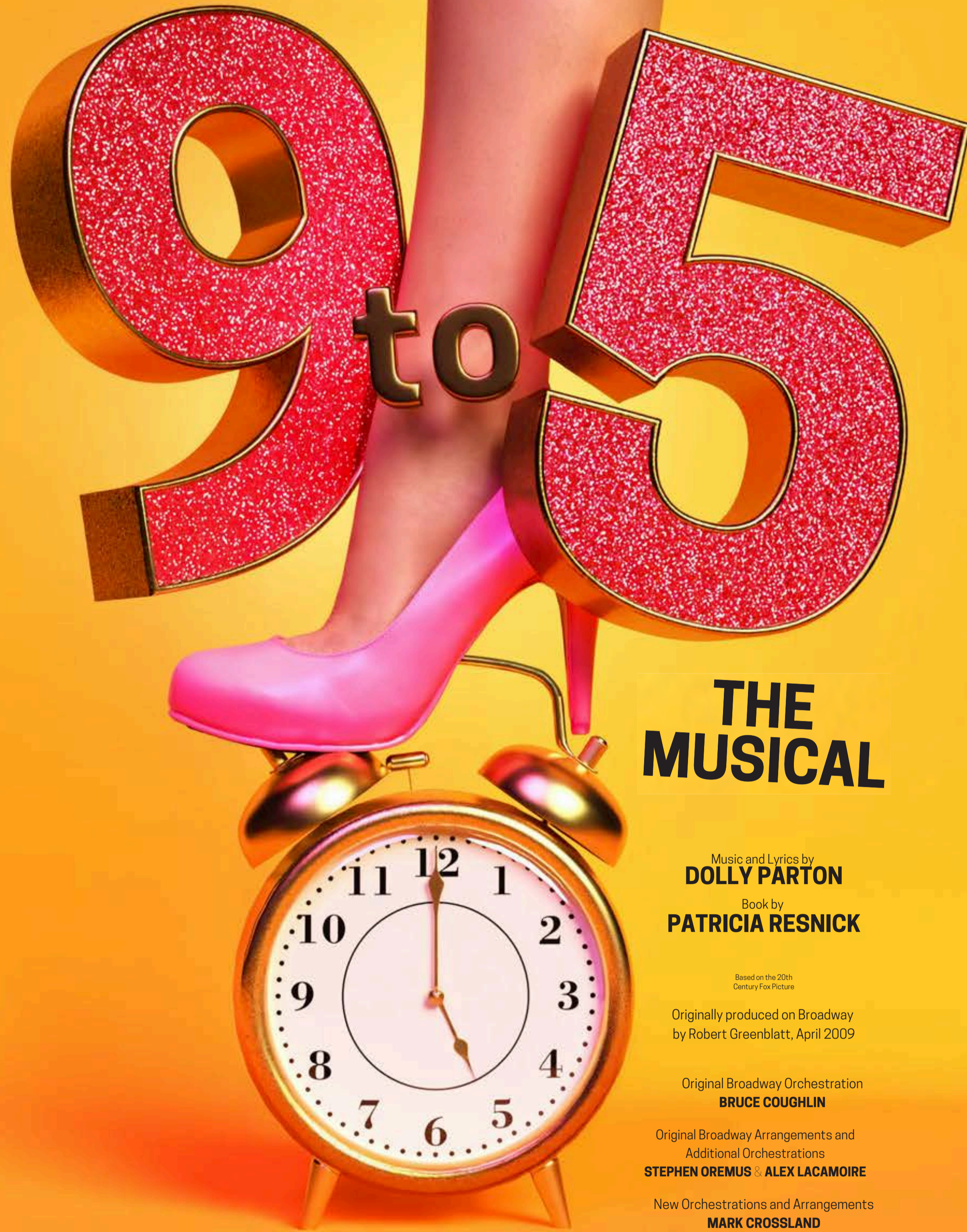
- Super Priority booking for selected shows
- Invitations to VIP events, press and gala nights
- Complimentary backstage tour
- Two top-priced tickets to a Landmark Theatres production each year
- Your name featured as a member in our programmes for Landmark Theatres productions

**JOIN US - AND HELP KEEP THE SPOTLIGHT SHINING BRIGHT!
BECOME A MEMBER ONLINE OR SIGN UP AT THE BOX OFFICE**



LANDMARK THEATRES

presents



THE MUSICAL

Music and Lyrics by
DOLLY PARTON

Book by
PATRICIA RESNICK

Based on the 20th
Century Fox Picture

Originally produced on Broadway
by Robert Greenblatt, April 2009

Original Broadway Orchestration
BRUCE COUGHLIN

Original Broadway Arrangements and
Additional Orchestrations
STEPHEN OREMUS & ALEX LACAMOIRE

New Orchestrations and Arrangements
MARK CROSSLAND

By arrangement with Music Theatre International



SAT 4 - SAT 11 JULY
NEWTHEATRE-PETERBOROUGH.COM

Landmark Theatres Present



CINDERELLA

Written by David Griffin-Stephens
Music & Lyrics by Simon Hansen



Supported using public funding by
**ARTS COUNCIL
ENGLAND**



NEW

THEATRE

PETERBOROUGH

SAT 12 DEC '26 - SUN 3 JAN '27

TICKETS ON SALE NOW AT NEWTHEATRE-PETERBOROUGH.COM



newtheatre-peterborough.com

01733 852992

peterborough.tickets@landmarktheatres.co.uk

landmarktheatres.co.uk

Charity number: 1214947



LANDMARK
THEATRES