



# New Theatre Peterborough Technical Specification

REVISED: FEBRUARY 2026



## Introduction:

Thank you for taking the time to review our Technical Specification for the New Theatre Peterborough. We are looking forward to hosting your show soon.

We kindly ask that you thoroughly read through this documentation to ensure a seamless visit to Peterborough. While we have endeavoured to include all necessary details within the specification, should you require any additional information, please do not hesitate to contact us using the email addresses provided below. Please note, due to the nature of our operations, responses may occasionally be delayed and sent outside of standard working hours.

To assist our Technical Department, we request that your technical rider be submitted no later than six weeks prior to your performance, with a minimum requirement of four weeks. Kindly forward this to Patch Tate at

[Patch.tate@landmarktheatres.co.uk](mailto:Patch.tate@landmarktheatres.co.uk).

Please be aware that, due to our busy program across both venues, pre-rigging may not always be achievable ahead of your tenancy. In such cases, pre-rigging will need to be accommodated within your rig/fit-up schedule. Additionally, all pre-rigs are subject to extra charges, which must be discussed and approved prior to your event.

Kindly note that any equipment removed for your production, such as PA or lighting, must be reinstated after your performance. This may require additional hours to be added to the BECTU get-out process.

Finally, should shower facilities be needed post-get-out, this will also incur additional hours, which will be reflected in the final settlement.

Thank you for your understanding, and we look forward to welcoming you to the New Theatre Peterborough.



## Theatre Contacts:

Name	Position	Email Address
David Griffen- Stephens	Head of Programming and Production	<a href="mailto:David.griffen-stephens@landmarktheatres.co.uk">David.griffen-stephens@landmarktheatres.co.uk</a>
Jag Singh	Head of Customer and Commercial	<a href="mailto:Jag.singh@landmarktheatres.co.uk">Jag.singh@landmarktheatres.co.uk</a>
Natalie Phillips	Head of Content and Business Development	<a href="mailto:natalie.phillips@landmarktheatres.co.uk">natalie.phillips@landmarktheatres.co.uk</a>
Matt Oscroft	Technical Manager	<a href="mailto:matt.oscroft@landmarktheatres.co.uk">matt.oscroft@landmarktheatres.co.uk</a>
Patch Tate	Deputy Technical Manager	<a href="mailto:patch.tate@landmarktheatres.co.uk">patch.tate@landmarktheatres.co.uk</a>
Louise Waldron	Ticketing and Insights Manager	<a href="mailto:louise.waldron@landmarktheatres.co.uk">louise.waldron@landmarktheatres.co.uk</a>
Belinda Ayres	Operations Manager	<a href="mailto:belinda.ayres@landmarktheatres.co.uk">belinda.ayres@landmarktheatres.co.uk</a>

## Addresses / Parking

Main Theatre Address	Dock Door / Stage Door
New Theatre Peterborough 46 Broadway Peterborough Cambridgeshire PE1 1RT	78 Park Road Peterborough Cambridgeshire PE1 2TN

Please note our venue is not constantly manned or open, so please refrain from sending parcels to this venue prior to your arrival, in addition our Stage Door is not staffed. A door code will be issued on arrival for access.

The venue has a public car park adjacent to the theatre, this is also the loading bay, this has a total capacity of 16 spaces. Please note that as this is a public car park, **spaces cannot be guaranteed**. If the show is using multiple trucks, the car park can be restricted to the public via a barrier, please ensure the Technical Manager is aware of vehicle arrival times and proposed movements.

Please also note that if an articulated vehicle is parked here for the duration of the run, this reduces the spaces to 6.

Please provide vehicle registrations to the Technical Manager to be exempt from parking fines.

There are 5 spaces available to each company at no charge. Any further are payable at the car park machine (This machine is cash only). Please note this will be reduced to 3 if a truck is left onsite.

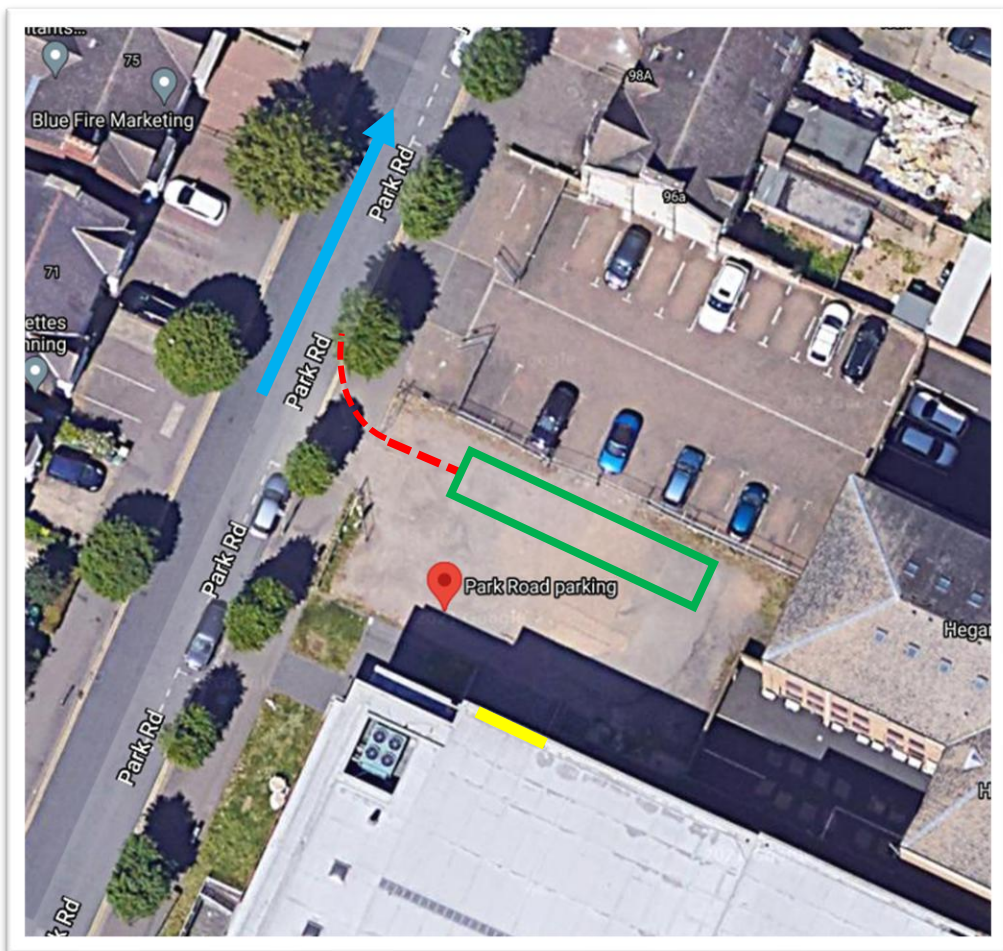
The loading door is accessible from the car park and has access for 40ft Trailers. One trailer may be left on site with prior notification to the Technical Manager.

Please note **NO** overnight arrival is permitted due to the barrier being used. Trucks and coaches cannot access the car park until the allocated time of load in.



## Parking Information Continued:

**What3Words Location:** Tested/Palm/Remind



We request that vehicles pull past the car park and then reverse in keeping tight to the right-hand side of the car park alongside the fence. As image above..

We struggle to get the truck up to the dock doors due to the tight corner; the above is our preferred method of unloading as it allows greater space onstage. This means once parked the truck can stay parked which shouldn't infringe on the drivers' hours.

Please note if you do wish to load at the dock doors, the truck must be moved to the fence line once empty, to comply with our Health and Safety and fire regulations. Regardless of driver's hours the truck would need to move before we can admit audience into our theatre.

## Health and Safety

### THE FOLLOWING REGULATIONS FORM AN INTEGRAL PART OF THE STANDARD NEW THEATRE CONTRACT

- 1) Any electrical equipment brought into the New Theatre by, or on behalf of the Production must strictly comply with the current regulations for the Electrical Equipment of Buildings and carry a current PAT test certificate. The Production's equipment and its installation, removal and maintenance is the responsibility of the Production company and must, at all times, be under the supervision of a qualified person.
- 2) The Production shall ensure that all electrical equipment and tools brought to site, comply with all relevant statutory requirements including the "Electricity at Work Regulations 1989". Such equipment and/or tools shall be operated and used in a safe manner and the Production Manager shall make available for inspection, evidence that the equipment has been tested in accordance with **PUWER** regulations.
- 3) The Technical Manager reserves the right to instruct the Production Manager, where equipment and/or cables may be positioned within the Auditorium or other parts of the building accessible to the public and may delay the performance until the Production has satisfied that any such equipment and/or cables may not interfere with the safety of the public or the staff of the New Theatre.
- 4) All lifting and suspension equipment brought to site by the Production must comply with all current legislation and the promoter shall make available for inspection, evidence that the equipment has been tested and examined in accordance with current LOLER legislations. \*\*

#### ***\*\*Lifting Operations and Lifting Equipment Regulations 1998 (LOLER)***

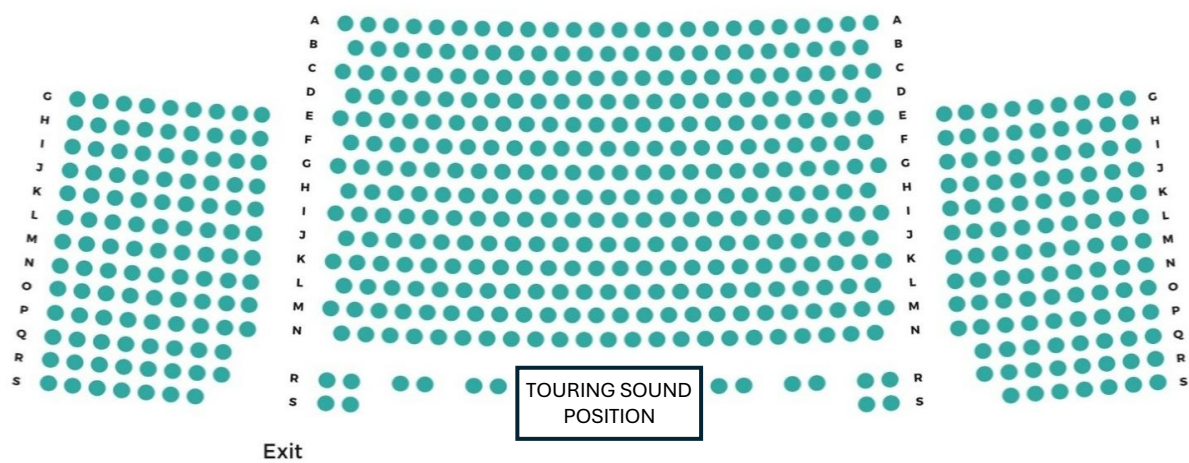
- 5) The Production Company shall have carried out and have available, risk assessments of all special effects used in the production, and of all perceived hazards associated with the unloading, manual handling, erection and reloading of all scenery and electrical equipment brought to site. Written assessments of significant risks in the workplace are required by law - ref. The Management of Health and Safety at Work Regulations 1992 (Regulation 3).
- 6) It is expected that the Tour Manager, or Deputy, will discuss with the New Theatre Staff, the fit-up of the production prior to commencement based on a prepared Method Statement, this should be done at the time of the initial CDM Briefing.
- 7) Advanced notice is required of any proposed use of flame/fire effects and pyrotechnics.
- 8) The Production agrees to fully compensate the New Theatre for: Any loss or damage to the Theatre or it's fixtures and fittings arising during the use of the Theatre by the Promotor or after the Production and including consequential loss.

# Theatre Seating Capacity:

Stalls: 571  
Circle: 508  
Accessibility Seating: 8  
Total seated capacity: 1,079

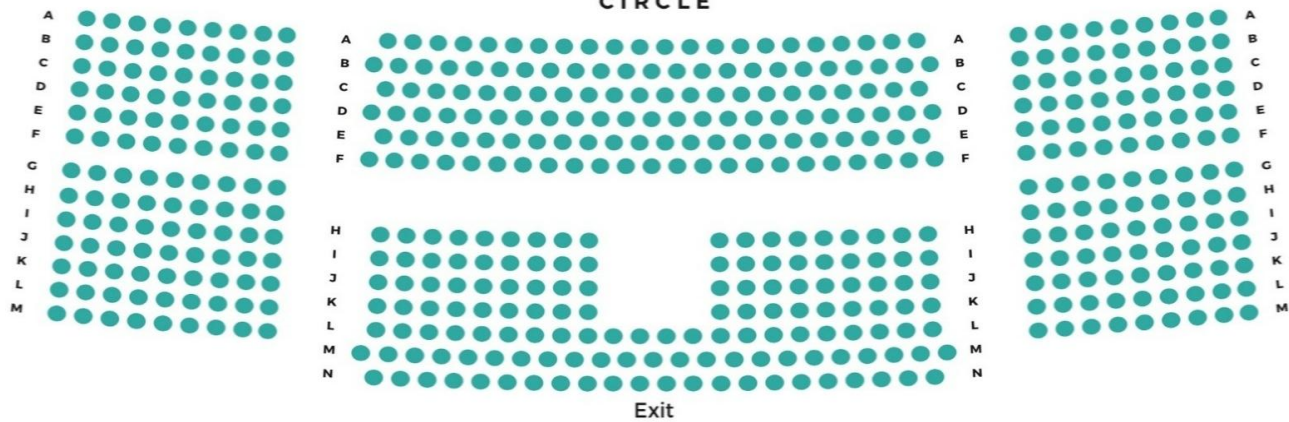
## STAGE

### STALLS



Exit

### CIRCLE



Exit

FOLLOW SPOT  
POSITION

FOLLOW SPOT  
POSITION



LANDMARK  
THEATRES

## Stage Information & Dimensions

Please note our proscenium is created using soft drapes. Treads to stage are available both Stage Left and Right, please note these are positioned mid-stage due to the way the forestage is constructed.

House tabs are permanently rigged on our false prosc and manually operated from the stage left wing.

**\*\*\* PLEASE NOTE WE DO NOT HAVE A SAFETY CURTAIN \*\*\***

**Rake:** 1:30 (1.7 Degrees)

**Height of the false proscenium from Auditorium Floor** - 10,000mm

**Width of the false proscenium** - 14,000mm

**Bottom of False Valance to Stage** - 6700mm

**Width between soft legs hung off false proscenium** - 10,800mm

**Height to the tab track hung off false proscenium** - 7400mm

**Depth of Stage** - 10,226mm

**Stage Right Wing** - L 5422mm x W 2930mm

**Stage Left Wing** - L 5125mm x W 3740mm

**Loading door** - W 2814mm x H 2747mm

**Stage height from auditorium floor** - 1110mm

**Distance from setting line** (forestage) and bar 1 - 1487mm



## Rigging :

Please note, we are a none flying house, our rigging is in the form of 2 x motorised grids, each grid utilising a total of six 1-ton motors, all fitted with load cells. Please spend some time familiarising yourself with the information below, as larger shows with higher weight loadings may struggle to achieve their desired effect due to capacities. Please note as this rig is fitted with load cells, once any motor comes close to their limit, the whole rig will cease to function.

**Rigging supplied and maintained by The Rigging Team**

**PLEASE NOTE THESE GRIDS ARE NOT SUITABLE FOR DYNAMIC LOADING OR AERIAL / PERFORMER FLYING**

## Downstage Grid:

13.450mm x 3.580mm Truss Grid suspended from 6x electric chain hoist with load monitoring. Total load capacity of 5000kg. UDL.

12 x 13,450mm bars, running across stage at 240mm centers.

**The maximum load on each bar is 288kg distributed evenly.**

The maximum CPL per 3m bay is 72kg.

Max bar height is 6.880mm.

## Upstage Grid:

13.450mm x 4.580mm Truss Grid suspended from 6x electric chain hoist with load monitoring. Total load capacity of 5000kg. UDL.

16x 13.450mm Bars, running across stage at 240mm centers.

**The maximum load on each bar is 288kg distributed evenly.**

The maximum CPL per 3m bay is 72kg.

Max bar height is 6880mm.

## Advance Truss:

12.000mm Truss suspended from 3x electric chain hoist with load monitoring.

**The maximum load on the advance truss is 1500kg distributed evenly.**

The Advance Truss is suitable for Intelligent fixtures and speakers only. There is no access equipment to allow focusing of generic fixtures.



## Stage Equipment:

1x Genie AWP30S (IPAF REQUIRED)  
1x 14 Rung Zarges  
2x 8 Rung A-Frames

## Drapes:

1x Full Stage Black  
3x W 2500mm x H 7000mm Pairs of BWS legs  
1x W 2500mm x H 7200mm Pairs of BWS legs  
4x W 14.000mm x H 1000mm Borders  
1 x Truss Borders

4x W 1400mm x H 6000mm Hard Masking Flats  
Selection of smaller masking flats available (at various sizes)

The venue also has a selection of braces, stage weights, conduit, scaffold tube. We also have an additional rigging stock, including SWR, Span sets, and Bow Shackles.

## Orchestra Pit :

**Please note we do not have a traditional Orchestra Pit**

The orchestra pit is located substage. It is not visible from the auditorium. There is space for up to a maximum of 15 musicians.

## Stage Management:

Our prompt desk is situated Mid Stage Left.  
There are 2x8" Monitors for the stage and MD position.  
The stage monitor camera is rigged on the circle front along with the infra-red camera and source.

Show relay to all dressing rooms, offices, and corridors back of house.

## Control Rooms:

The LX control position is in a closed control room with an open window.  
The sound mix position is in the center of the rear stalls. Maximum size for control is 3000mm. Please note that the sound control is located within the accessible seating area and therefore you will be operating next to patrons and needs to be kept clear. (This position is shareable with LX if required)



## Wardrobe:

Our Wardrobe is located in the substage area. For access, there is a passenger lift. The lift doors measure 2000mm (H) x 900mm (W)), 2040mm (D), alternatively there are two flights of stairs either side of dressing room corridor.

There are two washing machines and two condenser tumble dryers. An iron and ironing board are also available for visiting companies to use.

**PLEASE NOTE:** there is no running water/sink located substage.

## Dressing Rooms:

	Room	Capacity	
<b>Substage</b>	Orchestra Pit	15	Open Plan
	Wardrobe	4	Open Plan
<b>First Floor</b>	Dressing Room 1	3	Toilet & Shower
	Dressing Room 2	4	Toilet & Shower
	Dressing Room 3	8	2 Toilets & Shower
	Dressing Room 4	8	2 Toilets & Shower
<b>Second Floor</b>	Dressing Room 5 / Company Office	10	No En Suite Facilities
	Dressing Room 6	10	No En Suite Facilities
	Green Room		Full Kitchen Facilities and Water Fountain

## Production Power:

### Stage Left Power Supplies

1 x 32A 1 Phase  
1 x 32A 3 phase (located in the basement area)  
1x 63A 3 Phase (used to power the house distro, if required)  
1 x 63A 1 Phase (used to power the house PA, if required)  
1x 125A 3 Phase (located 10m away from the stage)

### Stage Right Power Supplies

1 x 400A 3 Phase Power Locks (Located USR)  
1 x 32A 3 Phase (located in the basement area)

### Follow Spots (Rear Circle)

3x 32A 1 Phase  
2 x 32A 3 Phase  
2x 16A 1 Phase

### Power Distro – 63A/3 Input

Output – 32/3 Phase, 12x 16A 240V, 6x Female Socapex  
Cable – 10m 63A/3, 5m 63A/3 & 5m 32A/3

# Lighting Equipment

## Lighting Control :

ETC Ion Lighting Control Desk

2 x DMX lines that run throughout the building, they terminate at the following: MSL, MSR, FOH Bridge 1, Advance Truss, Circle Rail and Control Position.

2 x Cat6 lines from Stage to FOH Touring position are available.

1 x DMX Line (clean)

DMX 1 – House Dimmers and Houselights

DMX 2 – Spare DMX for touring fixtures

## Dimming :

All our dimmers are ETC ColorSource ThruPower.

21 x Circuits FOH bridge

6 x Circuits circle front

78 x Circuits at ground level on stage. (via Socapex and 15amp)

## Permanent FOH LX Rig

FOH Bridge

12 x 750w ETC Source 4 15/30 Degree.

4 x 750w ETC Source 4 26 Degree.

## Profile Stock

6 x ETC Source 4 26 Degree

6 x ETC Source 4 25/50 Degree

## Fresnel Stock

10 x 1Kw Fresnel (not all have barndoors)

## PAR Stock

20 x Par 64 (CP62)

20 x Source 4 Pars

## Follow Spots

We do not have follows spots, follow spots will need to be hired in and the cost passed onto the visiting company. 2 x Cyrano's are available to hire with sufficient notice, and subject to availability.



LANDMARK  
THEATRES

## Sound Equipment

PLEASE NOTE OUR EQUIPMENT STOCK IS LIMITED AND WE ARE NOT ABLE TO PROVIDE SOUND SERVICES FOR BANDS, THIS ALSO INCLUDES ENGINEERS.

### FOH Mixing Position

Please allow at least 70m of audio multicore to reach our Front of House mixing position  
2 x Cat6 Cables are available, between Stage and FOH Touring Position.

### Mixing Desk

Yamaha QL1, with a 32 in and 16 out RIO.

### Sound Power

1 x 63A Clean Earth Single Phase (Located MSL)

1 x 32A Clean Earth Single Phase (Located MSL)

\* Please note that the 63A is unavailable if you are using the house PA System. \*

### House Sound Rig

30x Nexo GEO M620 Stalls and Circle Cover (Nexo NX4X1 MK2 Amps)

6x Nexo LS18 Sub (Nexo NX4X4 Power Amps)

4x D&B MAX2 Wedge (D&B D6 Amp)

6x D&B E0 Delays (D&B D6 Amps)

### PA Wings

There are two 500kg chain hoists either side of the stage for a PA. Please confirm your requirements for the use of the hoists at least two weeks in advance of your arrival.

**Please note there is a cost to remove and replace our PA System**

### Video

There are various video patches (BNC & Composite) around the venue.

### Comms

1 x Clear-Com PL Pro MS-232 (2 Channels)

5 x 2 Channel Belt Pack

5 x Heavy Duty Single Muff Headset

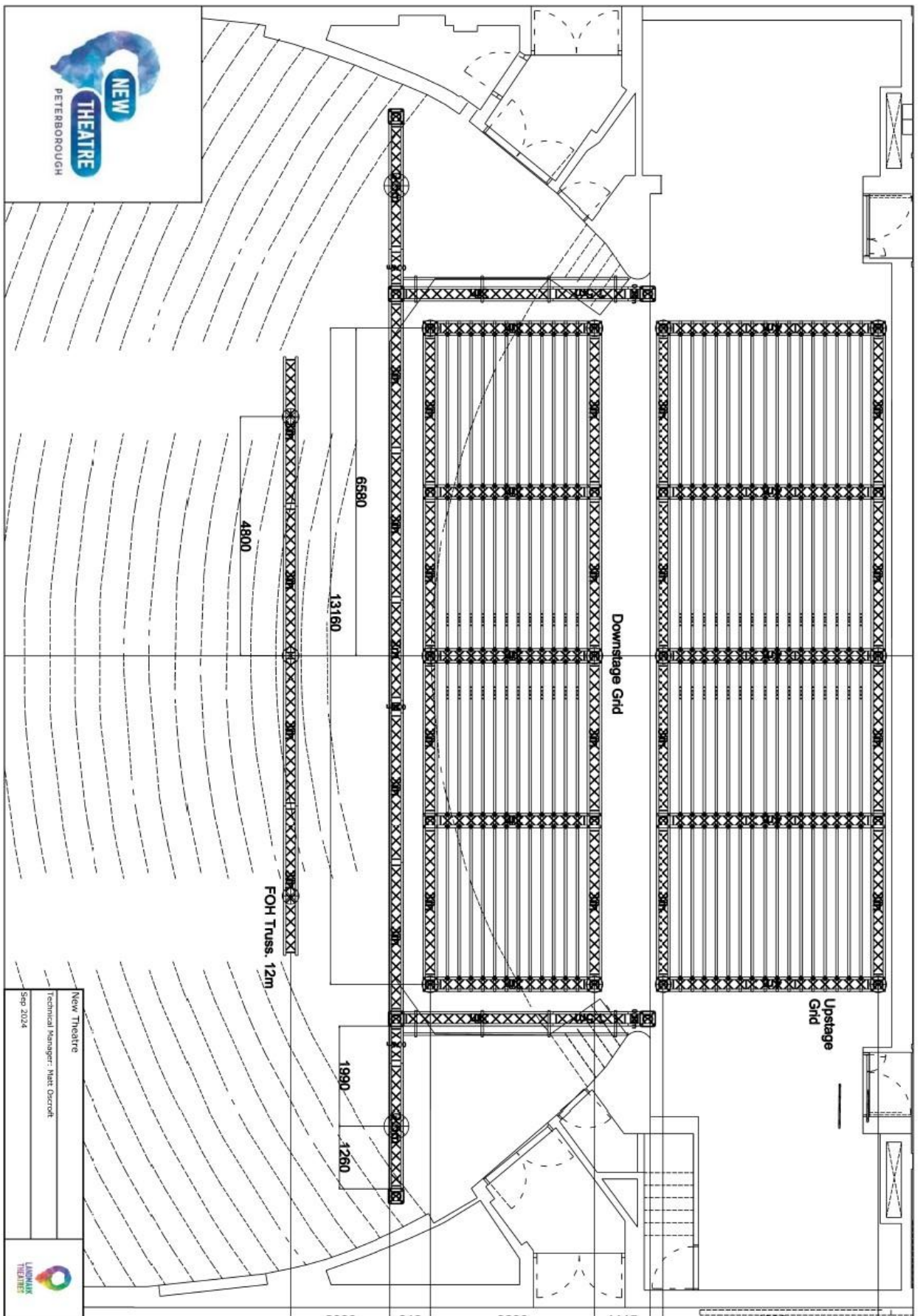


# Venue Re-Charges

All equipment listed below are subject to availability and discussion with either the technical Manager or deputy. Additional equipment can be sourced and hired in at the expense of the Visiting Company. All prices listed below are subject to VAT.

ITEM	CHARGED RATE	COST
Sennheiser Radio Microphones	Per Channel /Per Day	£45.00
Haze Machine	Per Day	£25.00
	Per Week	£100.00
Lite Deck Staging (4 x available)	Per Day	£25.00
Follow Spot Operator	Per Hour	£25.00
Technician	Per Hour	£25.00
Follow Spot Hire	POA	POA
Dedicated Sound Engineer (subject to availability)	Per Day	£350.00
Get Out Staff (BECTU)	Minimum 2 hours	£51.84
PA Removal & Replaced		£250.00
Additional Cleaning		£300.00
If it is deemed necessary, an additional cleaning charge will be added. This is for excessive waste or extensive cleaning regarding confetti or streamers.		





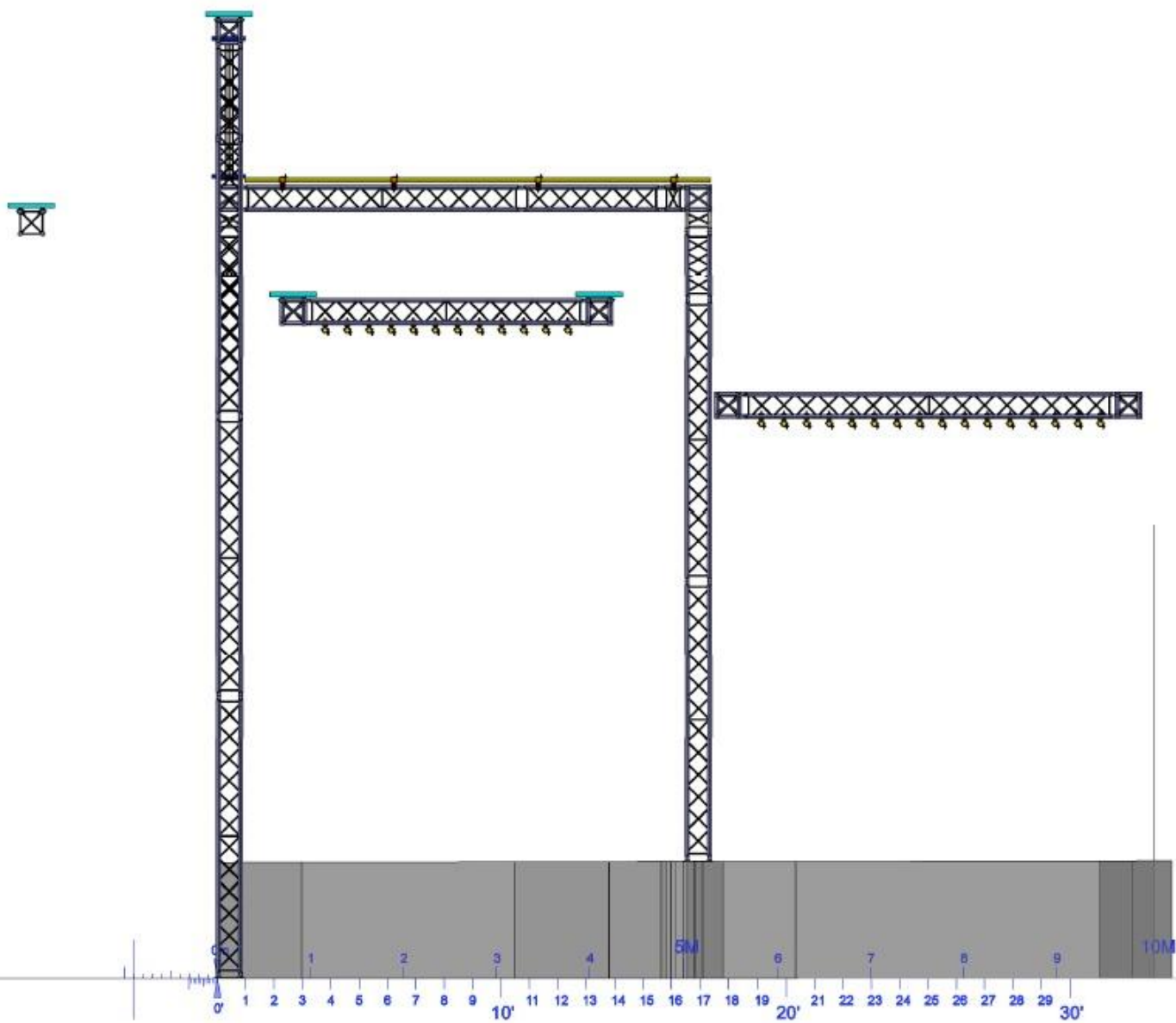
New Theatre  
Technical Manager: Matt O'Connell  
Sep 2024

Upstage  
Grid

Downstage  
Grid

FOH Truss, 12m





LANDMARK  
THEATRES

